

MAY 2019

Board of Directors

President	Larry Doel
V.P.	Paul Meikel
Treasurer	Barry Wood
Secretary	Mari Colelli
Asst VP	Bob McNeely
Asst VP	Rich Campagna
Asst. Tres	Dave Beaudry
Asst. Tres	Bernie Tuttle
Asst. Sect	Tom VanHoven



ORO Staff

**Park Manager
Janna Laine**

Bookkeeper—— Leesa Hodges
Admin. Assistant—Donna Pangallo

Maintenance
Supervisors———Randy Watson
 Roger Grider
 Peter Laine
Safety Supervisor——Fred Tarbox
Lead Grass Crew—— PJ Riker
Lead Golf Course—— Jamey Clements
Landscape ———Alfredo Venture

**CONDO FEES ARE DUE ON
JULY 1, 2019**

The fee is **\$490** per quarter per unit. If your
JULY payment is not received on or before

JULY 15, 2019 you will be assessed a **late fee of**
\$25.00 and finance charges. Remember to
put your quarterly payment in the mail before

July 1, 2019



Outdoor Resorts
Orlando, Florida

NUMBERS YOU CAN COUNT ON

Outdoor Resorts at Orlando
9000 US Highway 192, #1000
Clermont, FL 34714-8299

E-Mail: info@oro-orlando.com
Web: www.oro-orlando.com

Office..... 863-424-1407
Fax..... 863-424-5476
Maintenance..... 863-424-1066
Safety..... 863-424-0211
Mailroom..... 863-424-5620

OFFICE HOURS

Mon. - Fri. 8am - 4pm
Sat. & Sun. Closed

MAILROOM HOURS

October 1 - March 31

Mon. - Sat. 9am - 12:00pm
12:30pm - 2:00pm

Sun. & Holidays Closed

April 1 - September 30

Mon. - Sat. 9am - 12pm
Sun. & Holidays Closed



*Specializing in the
Disney Area*



ALL REAL ESTATE NEEDS

Bardell Real Estate

SELLING OR BUYING

863-424-2309

Fax: 863-424-1081

9110 Hwy 192, Clermont

One mile East of Hwy 27

www.bardellrealestate.com

**BOARD OF DIRECTORS
MEETINGS**

THE ORO BOARD OF DIRECTORS INVITE YOU TO ATTEND THEIR MONTHLY BOARD MEETINGS. THEY WILL BE HELD UPSTAIRS IN THE CLUB HOUSE AT 10:00 a.m. ON THE FOLLOWING DATES:

Saturday,
July 20, 2019
August 17, 2019
September 21, 2019

Please check TV channel 998 or call the Condo Office for any changes to the meeting dates/times.

OUTDOOR RESORTS AT ORLANDO

DISCLAIMER

This newsletter is published by the Management at Outdoor Resorts at Orlando, Inc. as a courtesy to all residents. Neither Outdoor Resorts nor Management assume any responsibility for article content. Advertising/Articles are not endorsed, nor is there any implied warranty by Outdoor Resorts at Orlando or its staff.



The following people have purchased property since the last newsletter. Welcome

Paul Mueller	TX	590
Mildred Portz	FL	547
Dora Jane Lawrence	ON	30
Rodney & Kelly Riker	FL	48
Robert & Kelly Woolman		82
Vadim Dorofeev & Zhanna Yerofiyova		355
Nancy Taddeo, Darlene Stevens		40
Sam & Ruth Coco	PA	832
Bruce & Jane Joubert	ME	84
Brian & Lora Benrud	WI	446
Wade & Elizabeth O'Dell	IN	882
John & Deborah Boncella	PA	827
Ronald & Dawn Jackson	MN	745
Louis & Brenda Martinez	MI	422
Kelli Hunt	NY	464
Ravinder Pasumarthi	FL	295
Georgia & Almus Chancey	NH	3
Holly Trahan		946
Darlene & Mark Litteral	KY	694
James Bryan Drye	MI	583
James Vallicelli & Jean Rudy	WI	235
William Reid		186
Lino & Marisol Mendez		564
Virginia & Richard Brennan	MA	461
Sheridan Schiavone		733

ATTENTION OWNERS:

When you have:

***An arriving guest for one day or a delivery being made, call SAFETY for car pass.**

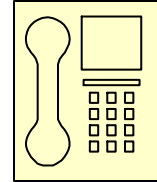
(3-day pass for car and cargo trailers, bath house parking, etc. from Safety)

Safety: 863-424-0211

When you have:

***An arriving guest for longer than a day, call OFFICE for car pass.**

Office: 863-424-1407



This will eliminate the need of your guest or delivery being held up at the gate while a phone call is made to you to verify their entrance into the park.

NOTICE TO ALL OWNERS

ORO has remodeled **Bath House #5** to include handicap accessible bathrooms and shower facilities. There are owners out in the park who have either their spouses or visiting nurses help them with their showering needs. Most of the bathrooms in the homes out here aren't big enough to accomplish this. With that being said, **ORO** has started a new program this season. If you assist your loved one in the bath house, you can ask the office for a laminated sign to be used at **Bath House #5**. This sign will indicate to anyone else that wants to enter the restrooms that there is "**mixed**" company occupying the restroom at this time. The bath house will not be closed down during that time, it would be up to each individual if they feel comfortable using a restroom occupied by "mixed" company.

Annual Tree Trimming

Please let the office know by July 15, 2019 if you want extra trees trimmed. The cost is \$30 for each extra tree. Due to issues with collecting payments this year we will require payment in advance of the trimming.



Dear Fellow Home Owners,

Given the recent restructuring of our Events/Entertainment Committee, (formerly known as the Recreation Committee), we are asking all those home owners who may have made a reservation for an event for the upcoming 2019-2020 season to please reconfirm that reservation by remitting payment for that reservation to ORO – E/E (Events/Entertainment) Committee. That payment can be mailed to ORO, Attn: Entertainment Committee, 9000 US Highway 192 #1000, Clermont, Florida 34714. Upon receipt of your payment a confirmation will be mailed to you. Please be advised we have no record of any reservations made at this time.

Also, enclosed is a spread sheet using the format that we began utilizing last year to order tickets for the upcoming season. We will begin actively selling tickets October 1, 2019 and would encourage you to return this sheet to us at the address listed above, with your payment for any shows which you may be interested in attending.

We are pleased to announce that beginning November 5, 2019 we will have representatives selling tickets at the clubhouse upstairs two days a week. Tuesday afternoons from 1:30 pm – 3:00 pm and Wednesday mornings 10:00 am – 11:30 am. We hope that you will find these added hours conducive to your schedule.

Lastly, should you have any questions with regards to the upcoming Events/Entertainment season please feel free to contact the number listed on the Entertainment Schedule. It is the number to the ORO Office. They will take a message and have a representative of the Events/Entertainment Committee contact you.

We are looking forward to seeing everyone in the fall. Have a great summer.

Thank you.

The Events/Entertainment Committee

Mosquito Spraying

The Environmental Protection Agency has approved a number of pesticides for residential spraying, saying they are generally **safe** when used properly. But the agency also warns that any chemical **spray** poses some risks. People with breathing problems/respiratory issues should stay in the house when spraying occurs. The spray can irritate peoples and pets eyes. Shut windows in the house and doors. Southern Mosquito Control comes into the park on Saturday nights usually after midnight. The County sprays once a month at dusk. We have asked to be notified when the County will be spraying in ORO, when this occurs we will post it on the ORO Website.



PROPANE BY THE GALLON

\$3.95 incl tax

\$5.00 to purge new tanks

Fill Hours **7 days a week 8am - 3pm**

ORO Residents: Free pick up & Delivery available on Wednesdays. Contact the office.

Prices subject to change. Prices include tax.

ONLY CREDIT CARDS ACCEPTED ON WEEKENDS

AMS
Insulated Aluminum Roof Over

WHY THE WEATHER-LOK ROOF OVER SYSTEM ?
Lifetime Warranty · Energy Efficient
Maintenance Free · Custom Tri-Bend Facia
Custom Gutter / Overhang System

At AMS we use only Energy Efficient Custom Rolled Aluminum. We will not use membrane products or materials that may shrink, dry rot, or deteriorate over time

Call Today to Experience the AMS Difference
Over 100,000 Satisfied Customers!

1-800-226-1334

FAMILY OWNED & OPERATED AND
SERVING FLORIDA RESIDENTS SINCE 1977
Evening and Weekend Appointments Available
CG C1505972 · CC C042787 · CC C1328662

17th Anniversary
BBB A+ Rating
MADE IN THE USA
MasterCard VISA Discover

WEEDS, WEEDS and MORE WEEDS.....

The Compliance Committee has started checking for weeds at each lot. After doing just the exterior roads they have two pages of lots with weeds. You are responsible for the upkeep of your lot even when your not here.

Please take care of your weeds before the violation letters get sent out.



Serving Central Florida Since 1960

Faneuf Insurance Agency

36 W. Polk Ave. , Lake Wales, FL 33853

863-676-7800

www.faneufinsurance.com

Mobile Home, Home Auto, Motorcycle,

Recreational Vehicle,

Life and Umbrella Policies Available

If you are interested in putting your house or RV site into the Rental program, please contact the Front Office for assistance. If you would like to check out ORO's rental website, the address is



www.rentwithoro.com

*Results in Level Detected column for inorganic contaminants and Radium 226 are the highest detected at any sampling point or the highest average based on frequency.

Radiological Contaminants

Contaminant and Unit of Measurement	Dates of Sampling (mo./yr.)	MCL Violation Yes/No	**Level Detected	Range of Results	MCLG	MCL	Likely Source of Contamination
Gross Alpha emitters (pCi/L)	Oct / 2018	No	4.28	n/a	0	15	Erosion of natural deposits.
Combined Uranium (pCi/L)	Oct / 2018	No	1.24	n/a	0	2	Erosion of natural deposits.
Radium 226/228 (pCi/L) (combined Radium)	Oct / 2018	No	1.48	n/a	0	5	Erosion of natural deposits.

Inorganic Contaminants

Contaminant and Unit of Measurement	Dates of Sampling (mo./yr.)	MCL Violation Yes/No	**Level Detected	Range of Results	MCLG	MCL	Likely Source of Contamination
Arsenic (ppb)	Dec / 2018	No	3.79	n/a	n/a	10	Erosion of natural deposits; runoff from orchards; runoff from glass and electronics production wastes.
Barium (ppm)	Dec / 2018	No	0.0113	n/a	2	2	Discharge of drilling wastes; discharge from metal refineries; erosion of natural deposits.
Cadmium (ppb)	Dec / 2018	No	0.190	n/a	5	5	Discharge from industrial processes including mining; metal plating, phosphate fertilizers, and sewage sludge; erosion of natural deposits.
Fluoride (ppm)	Dec / 2018	No	0.263	n/a	4	4	Erosion of natural deposits; discharge from fertilizer and aluminum factories. Water additive which promotes strong teeth when at optimum levels between 0.7 and 1.3 ppm.
Lead (ppb)	Dec / 2018	No	0.16	n/a	15	15	Corrosion of household plumbing systems; erosion of natural deposits
Nitrate (as Nitrogen) (ppm)	Dec / 2018	No	0.695	n/a	10	10	Runoff from fertilizer use; leaching from septic tanks, sewage; erosion of natural deposits.
Nitrite (as Nitrogen) (ppm)	Dec / 2018	No	0.935	n/a	1	1	Runoff from fertilizer use; leaching from septic tanks, sewage; erosion of natural deposits.
Nickel (ppb)	Dec / 2018	No	1.05	n/a	100	100	Occurs naturally in the ground; used in electroplating, stainless steel and alloy products; can enter water from mining and refining operations.
Selenium (ppb)	Dec / 2018	No	0.91	n/a	50	50	Discharge from petroleum and metal refineries; erosion of natural deposits; discharges from mines.
Sodium (ppm)	Dec / 2018	No	14.7	n/a	n/a	160	Salt water intrusion, leaching from soil.

Stage 1 (Chlorine) and Stage 2 (TTHM's and HAA5) Disinfectant/Disinfection By-Product (D/DBP) Parameters

Chlorine: Level Detected is the 2018 monthly average for residual Chlorine; Range of Results is the range of 2018 monthly average Chlorine residual level results (lowest to highest) at the individual sampling sites. TTHMs and HAA5s: Level Detected is from the highest 2018 sample site test result.

Contaminant and Unit of Measurement	Dates of Sampling (mo./yr.)	MCL or MRDL Violation Yes/No	Level Detected	Range of Results	MCLG or MRDLG	MCL or MRDL	Likely Source of Contamination
Chlorine (ppm)	Jan - Dec 2018	No	0.795	0.7 to 1.0	MRDLG = 4.0	MRDL = 4.0	Water additive used to control microbes.
Haloacetic Acids (five HAA5) (ppb)	Aug / 2018	No	14.6	n/a	n/a	MCL = 60	By-Product of drinking water disinfection.
TTHM (ppb) (Total Trihalomethanes)	Aug / 2018	No	38.5	n/a	n/a	MCL = 80	By-Product of drinking water disinfection.

Lead and Copper (Tap Water)

Contaminant and Unit of Measurement	Dates of Sampling (mo./yr.)	AL Violation Yes/No	90 th Percentile Result	No. of sampling sites exceeding the AL	MCLG	AL (Action Level)	Likely Source of Contamination
Copper (tap water) (ppm)	Sept / 2018	No	.000747	0	1.3	1.3	Corrosion of household plumbing systems; erosion of natural deposits; leaching from wood preservatives.
Lead (tap water) (ppb)	Sept / 2018	No	0.152	0	0	15	Corrosion of household plumbing system, erosion of natural deposits

Outdoor Resorts at Orlando wishes to thank you for allowing its drinking water utility to provide your family with safe, good quality water in 2018. We are committed to insuring the quality and quantity of your water, and would ask that all our customers help protect this precious natural resource by conserving water whenever possible.

Along with EPA, Florida's DEP also requires that public water systems comply with regulations governing construction and operation, to further protect consumers and health issues relative to your water supply. Remember, the presence of contaminants does not necessarily indicate that the water poses a health risk. Should you have any questions or concerns about the information provided, please feel free to call the telephone numbers listed in this report or visit the EPA and DEP websites.

2018 Annual Drinking Water Quality Report Outdoor Resorts at Orlando

We are committed to ensuring the quality of your water and want you to be informed about the water and services delivered to you in 2018. Our goal is to provide you with a safe, dependable supply of drinking water. Therefore, we are very pleased to provide you with this Annual Water Quality Report that describes the quality of the water you drink everyday, information about the contaminants found in your water, and how this may relate to your health. The presence of a moderate amount of contaminants in drinking water within regulated standards is normal and does not indicate that the water poses a health risk. Should there be any reason for health concerns with your water, we would notify you immediately. We want our valued customers to be informed about their water utility.

Protecting your water: A Source Water Assessment (SWA) was conducted in 2018 by the Florida Department of Environmental Protection Agency (DEP) to identify and assess any potential sources of contamination in the vicinity of your water supply. The system's well was determined to be at a low risk for potential contamination from (2) domestic wastewater areas, and (1) Brownfield area. The SWA report is available on the DEP website: www.dep.state.fl.us/swapp.

Where does our water come from? The sources of drinking water include river, lakes, streams, ponds, reservoirs, springs, and wells. Our water treatment plant draws groundwater from one well drilled deep into the Floridan Aquifer, then chlorinated for disinfection. As water travels over the surface of the land or through the ground, it dissolves naturally occurring minerals and radioactive materials, and can pick up substances resulting from human or animal activity. Outdoor Resorts at Orlando routinely monitors for contaminants in its drinking water according to Federal and State laws, rules, and regulations.

The **Test Results Table** (over) shows the results of this compliance monitoring for the period of January 1, to December 31, 2018. Data obtained before January 1, 2018 and presented in this report are from the most recent testing done in accordance with the laws, rules, and regulations. If you have any questions about this report (or want to obtain a copy), or concerns about your water utility please contact David Blount at (863) 324-3330.

Contaminants that may be present in raw or source water before it is treated include:

- (A) *Microbial Contaminants*, such as viruses and bacteria, which may come from wastewater treatment plants, septic systems, agricultural livestock operations, and wildlife.
- (B) *Inorganic contaminants*, such as salts and metals, which can be naturally-occurring or result from urban storm water runoff, industrial or domestic wastewater discharges, oil and gas production, mining, or farming.
- (C) *Pesticides and herbicides*, which may come from a variety of sources such as agriculture, urban storm water runoff, and residential uses.
- (D) *Organic chemical contaminants*, including synthetic and volatile organic chemicals, which are by-products of industrial processes and petroleum production, and can, also come from gas stations, urban storm water runoff, and septic systems.
- (E) *Radioactive contaminants*, which can be naturally occurring or be result of oil and gas production and mining activities.

In order to ensure that your tap water is safe to drink, the US Environmental Protection Agency (EPA) prescribes regulations that limit the amount of certain contaminants in water provided by public water systems. The Food and Drug Administration FDA regulations establish limits for contaminants in bottled water that must provide the same protection for public health.

Drinking water, including bottled drinking water, may reasonably be expected to contain at least small amounts of some contaminants. The presence of these contaminants does not necessarily indicate that the water poses a health risk. Florida's drinking water rules require disinfection, so chlorine is added in our water treatment plant, followed by fifteen minutes contact time to destroy living organisms before being delivered to you. More information about contaminants and potential health effects can be obtained by calling the Environmental Protection Agency's Safe Drinking Water Hotline at 1-800-426-4791, or on their website at <http://www.epa.gov/safewater>.

Some people may be more vulnerable to certain contaminants than the general population. Immuno-compromised persons such as persons with cancer undergoing chemotherapy, persons who have undergone organ transplants, people with HIV/AIDS or other immune system disorders, some elderly, and infants can be particularly at risk from infections. These people should seek advice about drinking water from the health care providers. EPA/Center for Disease Control guidelines on appropriate means to lessen the risk from infection by cryptosporidium and other microbial contaminants can be obtained by calling the Environmental Protection Agency's Safe Drinking Water Hotline at 1-800-426-4791.

The Safe Drinking Water Act (SDWA) requires that utilities issue the following information, even if you have no Lead in your water: If present, elevated levels of lead can cause serious health problems, especially for pregnant women and young children. Lead in drinking water is primarily from materials and components associated with service lines and home plumbing. Outdoor Resorts at Orlando is responsible for providing high quality drinking water, but cannot control the variety of materials used in plumbing components. When your water has been sitting for several hours, you can minimize the potential for lead exposure by flushing your tap for 30 seconds to 2 minutes before using water for drinking or cooking. If you are concerned about lead in your water, you may wish to have your water tested. Information on lead in drinking water, testing methods, and steps you can take to minimize exposure is available from the Safe Drinking Water Hotline at 1-800-426-4791, or on their website at <http://www.epa.gov/safewater/lead>

Only test results exceeding a regulated minimum detection level are included in this report. In this table you will find many abbreviations you might not be familiar with. To help you better understand these terms we've provided the following definitions:

Non-Detects (ND) – means not detected and indicates that the substance was not found by laboratory analysis.

N/A - Does not apply.

Parts per million (ppm) – or Milligrams per liter (mg/l) – one part by weight of analyte to one million parts by weight of the water sample.

Parts per billion (ppb) – or Micrograms per liter – one part by weight of analyte to one billion parts by weight of the water sample.

Picocuries per liter (pCi/L) – picocuries per liter is a measure of the radioactivity in water.

Action Level (AL) – the concentration if a contaminant which, if exceeded, triggers treatment or other requirements, which a water system must follow.

Maximum Contaminant Level (MCL) – The "Maximum Allowed", is the highest level of a contaminant that is allowed in drinking water. The MCLs are set as close to the MCLGs as feasible using the best available treatment technology.

Maximum Contaminant Level Goal (MCLG) – The "Goal" is the level of a contaminant in drinking water below which there is no known or expected risk to health. MCLGs allow for a margin of safety.

Maximum Residual Disinfectant level (MRDL)– The highest level of disinfectant allowed in drinking water. There is convincing evidence that addition of a disinfectant is necessary for control of microbial contaminants.

Maximum Residual Disinfectant Level Goal (MRDLG)– The level of a drinking water disinfectant below which there is no known or expected risk to health. MRDLGs do not reflect the benefits of the use of disinfectants to control microbial contaminants.

In Memoriam

Mardria Pinter	747	January
Richard Zimmer	148	March
Roberta Kenney	366	April
Richard Deforge	647	April
Dave Ryner	288	May
Stewart Rushton	579	May
Glenn Shambeau	047	June

If you would like to honor your loved one with a memorial plaque, You can purchase one for \$10 in the front office. We will have one made and display it on the back wall of the first floor in the CH. Providing the office with the loved one's **name and date of passing** is all we need.

Storage

Storage has been having issues with unit owners purchasing cargo trailers without being on a storage waitlist or being far down on a waitlist and the owners want to leave their items on a temporary spot.

If you have not been assigned a lot or are not on a waitlist please do not expect to be able to leave your item in storage until your name comes up on the list. This also applies to boats in the marina. If you do not have a storage site to place your boat trailer on and there is room in temporary storage you may place the trailer there for the season not on a permanent basis. If there is no room in temporary storage you must store your trailer off site. Temporary Storage is not a year round storage site.



DUTCH INSURANCE
dutchInsurance@yahoo.com



863-557-5465

90 Maxey Plaza Circle, Haines City, Florida 33844
1-888-249-5464 Fax: 863-353-5809



Florida Home Insurance Program

MOBILE • MODULAR • MANUFACTURED • SINGLEWIDE • DOUBLEWIDE

✓ A RATED CARRIER	✓ PARK OR PRIVATE PROPERTY
✓ FULLTIME / SEASONAL / RENTAL	✓ 1982 AND NEWER HOMES
✓ VALUE 10K TO 125K	✓ REPLACEMENT COST
✓ RATES FROM 350 ANNUAL	✓ GOLF CART COVERAGE

WATERING SCHEDULE FOR ORO



If address ends in an even number you may water your lawn 2 days a week on **Thursday - Sunday**. If you live at an odd numbered address, you may water your lawn two days a week on **Wednesday - Saturday** .

midnight to 10:00 am

4:00pm to midnight

Benson Insurance Services

16554 Cagan Crossings Blvd. Ste. 2

1536 Sunrise Plaza Dr Ste 103
Clermont, FL 34714

Mobile Home & Auto

Insurance Specialists

“we can insure older homes”

352-243-8549

Mon-Fri 8:30-5:00

ORO CHANNEL NOW ON 998

For information on what’s happening in the park, please tune to channel 998.



MOBILE HOME ROOFING

Family Owned & Operated



**All Florida
Weatherproofing
& Construction, Inc.**

FREE

VIDEO ROOF INSPECTIONS

- Lifetime Transferable Warranty
 - Energy Efficient
 - Protects Your Home
- Roof Insurance Certifications
 - Financing Available
 - FREE Estimates

1.877.572.1019

AllFloridaRoofs.com



LICENSED & INSURED #CCC1327406 • CBC1259006

Great Energy Savings NOW!!

*Window
World*

“Simply the Best for Less”

WINDOWS - DOORS - SIDING



Call for Free in Home Consultation 863-665-7164

“Family Owned & Operated”
LIC# CBC1257854

101 Industrial Blvd West, in Winter Haven
www.WindowWorldPolkCounty.com

F.Y.I.

We will continue to use BB&T for our condo dues for the upcoming year 2019. Payment booklets will be mailed out in November.

Please make sure your payments are set up correctly with BB&T.



PLEASE NOTE:

All Polk County Permits as well as Park Permits must be posted in a window when work is being done.

URGENT!

Attention: South Lake County & Surrounding Areas...

**"YOU Will Never See Another Termite - Ant - Roach
or Bug in Your Home Again... Guaranteed"**



Pest Detector, Inc.

Termite & Pest Control
State Certified, Licensed & Insured



TERMIDOR

www.pestdetectorinc.com

352.533.4832 • 407.657.1210

35509

ORO MAILROOM

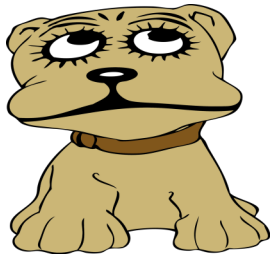
Please make sure you notify the mailroom when you **arrive** and **leave** for the season. This will ensure your mail gets to the right place. Please keep in mind that there is a charge to forward any medication that is not sent 1st class mail. The office will try and reach you before forwarding any medication to you.

Mailroom: 863-424-5620



Friendly Reminder

Please remember to pick up after your fur baby! Please do not place your dogs waste in another unit owners garbage can or in a bath house trash cans!



Telephone (352) 243-1441
(863) 588-3897
smilecrafters@gmail.com



SMILE CRAFTERS
ANIBAL (AL) TORRES, D.M.D.
& ASSOCIATES

Office Hours
By Appointment

1100 HIGHWAY 27, SUITE D
CLERMONT, FL 34714

XFINITY (Comcast) PHONE

800-266-2278

Is the local number to reach Xfinity if you are having problems with your cable TV. You will need to give your address and lot number.

Due to the Hippa laws the office is no longer allowed to contact Xfinity on the owners behalf. Owners will need to return their equipment when selling their home. You may return equipment to Xfinity in Orlando or bring it to UPS at Berry Town Center in Davenport and they will ship it back free of charge.

Please notify the office as soon as possible if your trash was not picked up. Advance Disposal calls the office before leaving the park and we can send them back in the park to get any trash they missed if we know early enough.



Thank you

**EVENTS/ENTERTAINMENT
2019/2020 SEASON**

NAME	DATE:
LOT #	
CELL #	RECEIPT #
EMAIL	

QTY		NOVEMBER	AMOUNT PAID
09	SAT	ORO BREAKFAST - CU Served 8am-9am \$5.00pp (\$7.00pp at the door)	
13	Wed	Barnyard Bash CU Doors open 5:30pm Game starts 6:00pm \$10.00pp	

DECEMBER			
14	Sat	ORO BREAKFAST - CU Served 8am-9am \$5.00pp (\$7.00pp at the door)	
14	Sat	Christmas Scavenger Hunt CU 4:30 Check in, 5:00 Hunt starts, \$12pp	
31	Tues	New Years Eve Party CU 9:00pm-1:00am Saloonatix \$25.00pp	

JANUARY			
11	Sat	ORO BREAKFAST - CU Served 8am-9am \$5.00pp (\$7.00pp at the door)	
11	Sat	Cahal Dunne CU 7:00pm \$10.00pp	
18	Sat	Welcome Back Dinner/Dance Dinner 5:30pm Dance 7PM \$15.00pp	
19	Sun	Poker Run CU 2:30 Check in 3pm Start \$12pp	
25	Sat	Michael D'Amore Variety Vocal Show CU 7:00pm \$15.00pp	

FEBRUARY			
01	Sat	Dance CU Too Smooth 7:00pm \$10.00pp	
08	Sat	ORO BREAKFAST - CU Served 8am-9am \$5.00pp (\$7.00pp at the door)	
15	Sat	Valentine Dance Saloonatix CU 7:00pm \$12.00pp	
16	Sun	Scavenger Hunt CU 12:30pm checkin, hunt starts 1pm, \$12.00pp	
22	Sat	"Paint by Music" Veterans Ent. Group CU 7pm \$18pp, Vets \$9 W/ID	
29	Sat	Cliff Erickson CU 7:00pm-10:00pm \$10.00pp	

SUB TOTAL:	
-------------------	--

**EVENTS/ENTERTAINMENT
2019/2020 SEASON**

QTY	MARCH	AMOUNT PAID
	08 Sun Dance Too Smooth CU 7:00pm \$10.00pp	
	11 Wed Barnyard Bash CU Doors open 5:30pm Game starts 6:00pm \$10.00pp	
	14 Sat ORO BREAKFAST - CU Served 8am-9am \$5.00pp (\$7.00pp at the door)	
	14 Sat Divas Through the Decades CU 7:00pm \$16.00pp	
	15 Sun Pool Party 1pm-4pm, Food 1-2pm, no glass, please bring chairs, \$6.00pp	
	17 Tues St. Patrick Dance CU Saloonatix 7:00pm \$12.00pp	
	21 Sat Winter Park Playhouse The Andrew Brothers, Includes motor coach, lunch tax and tip \$84.00pp	
	22 Sun ORO 48th Birthday Party CPL 1-3pm Music Allen Chamberlain \$4.00pp	
	24 Tues Ice Cream Social/Auction CU Doors open 6:15, Auction 7:15 \$8.00pp	
	28 Sat Joey Carmon CU 7:00pm \$10.00pp	
APRIL		
	04 Sat Last Dance of the Season Jim & Mandy CU 7:00pm \$10.00pp	
	11 Sat ORO BREAKFAST - CU Served 8am-9am \$5.00pp (\$7.00pp at the door)	

TOTALS

To ensure reservations for 2019-2020 season for any of the above listed shows,
please complete this sheet and return it with your payment to

ORO Entertainment
Attn: Entertainment Committee
9000 US Highway 192 #1000
Clermont, Florida 34714

2019

October

- 15 Tues Life Line Screening CU 8:30-5:30PM ***
- 18 Fri Bingo Starts - Tickets on sale at 3:30 Sales stop at 5:30pm CU
- 22 Tues Chris Ballard Presentation "Medi Care Plan Options" CU 11am ***
- 23 Wed Blood Drive 9:00am-2:00pm CPL ***

November

- 02 Sat Driveway Sale 9:00am-Noontime
- 05 Tues Event/Entertainment Committee Meeting CU 10:00am
- 09 Sat ORO Breakfast CU 8:00am-9:00AM \$5.00 in advance \$7.00 at the door
- 13 Wed Barnyard Bash CU \$10.00pp Doors open at 5:30pm Game starts at 6:00pm

December

- 03 Tues Event/Entertainment Committee Meeting CU 10:00am
- 14 Sat ORO Breakfast CU 8:00am-9:00AM \$5.00 in advance \$7.00 at the door
- 14 Sat Christmas Golf Cart Parade with Santa CPL Line Up 1:30pm, Start 2:00pm***
- 14 Sat Christmas Scavenger Hunt CU 4:30pm check in, hunt starts at 5:00pm
\$12.00pp in advance - \$14.00pp at the door*
- 31 Tues New Years Eve Party CU 9:00PM-1:00am Music by Saloonatix
\$25.00pp in advance - \$27.00pp at the door*

Ticket sales Club House Upstairs
Tuesdays 1:30pm-3:00pm
Wednesdays 10:00am-11:30am
beginning November 5, 2019

For Reservations Please Contact:

Email:
oroevent.entertainment@gmail.com
Phone: 863-424-1407
Fax: 863-424-5476

2020

January

- 07 Tues Event/Entertainment Committee Meeting CU 10:00am
- 11 Sat ORO Breakfast CU 8:00am-9:00AM \$5.00 in advance \$7.00 at the door
- 11 Sat "Cahal Dunne" CU 7:00pm \$10.00pp in advance - \$12.00 at the door*
- 13 Mon CPR/AED Training CU 10:30am-12:30pm***
- 14 Tues Medical Air Services (MASA) Presentation CU Noontime***
Must attend presentation Free Pizza and Drink
- 15 Wed Blood Drive 9:00am-2:00pm CPL ***
- 18 Sat Welcome Back Dinner/Dance CU Music by Jim & Mandy Doors open 5:00pm
Dinner served by 5:30pm, Dance 7pm \$15.00pp in advance, sorry no tickets @ door
- 19 Sun Poker Run CU 2:30pm check in, Run starts at 3:00pm
\$12.00pp in advance - \$14.00pp at the door*
- 21 Tues Polk County Sheriff Presentation Vial of Life Identity Theft, Operation ID, CU
10:00am Free****
- 25 Sat "Michael D'Amore" Variety Vocal Show CU 7:00pm
\$15.00pp in advance - \$17.00pp at the door*
- 28 Tues Chris Ballard Presentation "Retirement" CU 11:00am
Must attend presentation Free lunch and drinks

*Tickets will be sold at the door based on availability. Shows involving food will not offer door sales for planning purposes.

**See Inside Newsletter

***Sign up on Bulletin Board in Club House

Please make all checks payable to:
ORO Entertainment

Events/Entertainment 2019/2020 Season

February

- 01 Sat Driveway Sale 9:00am-Noontime
- 01 Sat Dance CU Music by Too Smooth 7:00pm \$10.00pp in advance-\$12.00pp at door*
- 03 Mon Fireman's Presentation "Stop the Bleed" CU 10:30am***
- 04 Tues Event/Entertainment Committee Meeting CU 10:00am
- 04 Tues Candidate Night CU 7:00pm
- 08 Sat ORO Breakfast CU 8:00am-9:00AM \$5.00 in advance **\$7.00** at the door
- 15 Sat Valentine Dance Saloonatix CU 7:00pm \$12pp in advance, \$14pp at the door
- 16 Sun Scavenger Hunt CU 12:30pm check in, hunt starts at 1pm, \$12pp in advance, \$14 at dr
- 17 Mon Self Defense for Women CU 10:30am***
- 18 Tues Comfort Cover Presentation CU 11:30am Must attend seminar Free pizza and drink
- 22 Sat "Paint by Music" CU 7:00pm This is a must see show performed by an all volunteer group ages 20-30, performing all around the world at Veterans Hospitals. \$18.00pp Veterans W/ID \$9.00pp in advance, Tickets at door \$20.00pp*
- 24 Mon Soup, Sandwich, Entertainment by Crystal Gage CU Noontime
\$10.00pp in advance - sorry no tickets will be available at the door*
- 25 Tues AARP Drivers Safety Class CU 9:00am-3:00pm***
- 29 Sat "Cliff Erickson" CU 7:00pm-10:00pm \$10.00pp in advance - \$12.00pp at the door*

Ticket sales Club House Upstairs
Tuesdays 1:30pm-3:00pm
Wednesdays 10:00am-11:30am
beginning November 5, 2019

For Reservations Please Contact:

Email:
oroevent.entertainment@gmail.com
Phone: 863-424-1407
Fax: 863-424-5476

March

- 03 Tues Event/Entertainment Committee Meeting CU 10:00am
- 07 Sat Annual Meeting CU 10:00am Please remember to register by 10:00am downstairs
- 07 Sat Daylight Savings Time Turn your clock ahead 1 hour
- 08 Sun Dance CU Music by Too Smooth 7:00pm \$10.00pp in advance-\$12.00pp at door*
- 09 Mon Organizational Meeting CU 10:00am
- 10 Tues Medical Air Services (MASA)CU noontime Must attend presentation Free lunch***
- 11 Wed Barnyard Bash CU \$10.00pp Doors open at 5:30pm Game starts at 6:00pm
- 14 Sat ORO Gala Breakfast CU 8:00am-9:00am \$5.00pp in advance, \$7.00pp at the door
- 14 Sat "Divas Through the Decades" CU 7:00pm \$16.00pp in advance, \$18.00 at the door*
- 15 Sun Pool Party 1pm-4pm, Food served 1pm-2pm, No Glass, Please bring chairs, \$6 in adv.
- 16 Mon CPR/AED Training CU 10:30-12:30pm***
- 17 Tues St. Patrick Parade Meet at CPL 12:30pm Start at 1:00pm***
- 17 Tues St. Patrick Dance CU Music by Saloonatix 7:00pm \$12pp in advance, \$14pp at door*
- 18 Wed Blood Drive 9:00am-2:00pm CPL ***
- 21 Sat Winter Park Playhouse Production "The Andrew Brothers" Includes motor coach, lunch, tax and tip \$84.00pp
- 22 Sun ORO 48th Birthday Party CPL 1-3pm Music Allen Chamberlain \$4.00pp in advance
- 24 Tues Ice Cream Social/Auction CU Doors open 6:15pm, Auction 7:15pm \$8pp in advance
- 28 Sat Joey Carmon CU 7:00pm \$10.00pp in advance, \$12.00pp at the door*

*Tickets will be sold at the door based on availability. Shows involving food will not offer door sales for planning purposes.

**See Inside Newsletter

***Sign up on Bulletin Board in Club House

Please make all checks payable to:
ORO Entertainment

April

- 04 Sat Driveway Sale 9:00am-Noontime
- 04 Sat Last Dance of Season Jim & Mandy CU 7:00pm \$10pp in advance, \$12pp at the door*
- 07 Tues Event/Entertainment Committee Meeting CU 10:00am
- 11 Sat ORO Breakfast CU 8:00am-9:00AM \$5.00 in advance **\$7.00** at the door

COMMUNITY

Free Estimates

ROOFING OF FLORIDA, INC.



Lic# CCC1330642

"Proudly Serving Your Community"

100%
Maintenance Free Roofs!

We Do All
Roof Overs, Roof Coatings
Roof Repairs & Inspections
on all Manufactured Homes

800-511-2517

www.FloridasBestRoof.net



Lifetime Warranty on
Labor & Materials!

Hurricane Preparedness

It's that time of year again, Hurricanes! In the event that a hurricane comes through ORO, we will assess all damages in the park. After all assessments have been completed all damages and photos will be placed on our website. We will make every effort to contact all owners via phone or email with major damages. For those of you still here in the park, below is a list of items to keep on hand during this season:

Water—at least 1 gallon daily per person for 3-7 days.

Food—At least enough for 3-7 days non-perishable package or canned food ,juices, snacks, non electric can opener, cooking utensils, cooking fuel, paper plates & plastic utensils.

Blankets, Pillows, Toiletries, Hygiene items, Moisture Wipes, First Aid Kit, Medicines and Prescription drugs for at least 3-7 days.

Flash light, batteries, radio, cell phone (fully charged or adapter for car use).

Cash (many ATM's and Banks may not be able to process cards for you).

Pet food & water for at least 3-7 days

Fill you cars gas tank.

Keep important documents in a water proof container.

Make sure you know where the closest shelter is that will suit your needs.

HARVEY MOBILE HOME INC.

“Turning customers into friends since 1976”

13025 S. Highway 441

Summerfield, FL 34491

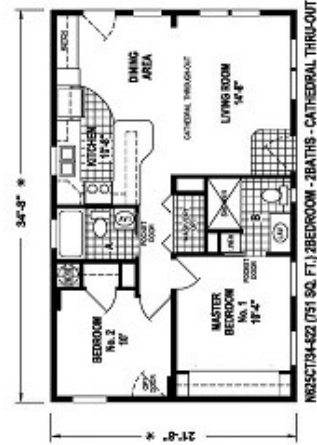
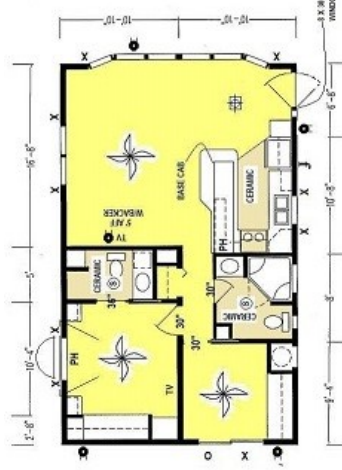
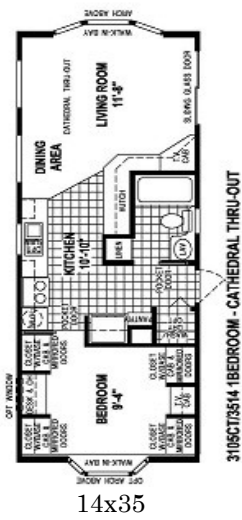
(7 miles north of The Villages)

(352) 347-5290 or 1-866-486-2315

The
Park Model Specialist
Easy Financing

SKYLINE
BRINGING AMERICA HOME. BRINGING AMERICA FUN.

We
Welcome
Friends



Outdoor Resorts at Orlando
9000 US HWY 192 #1000
Clermont, FL 34714